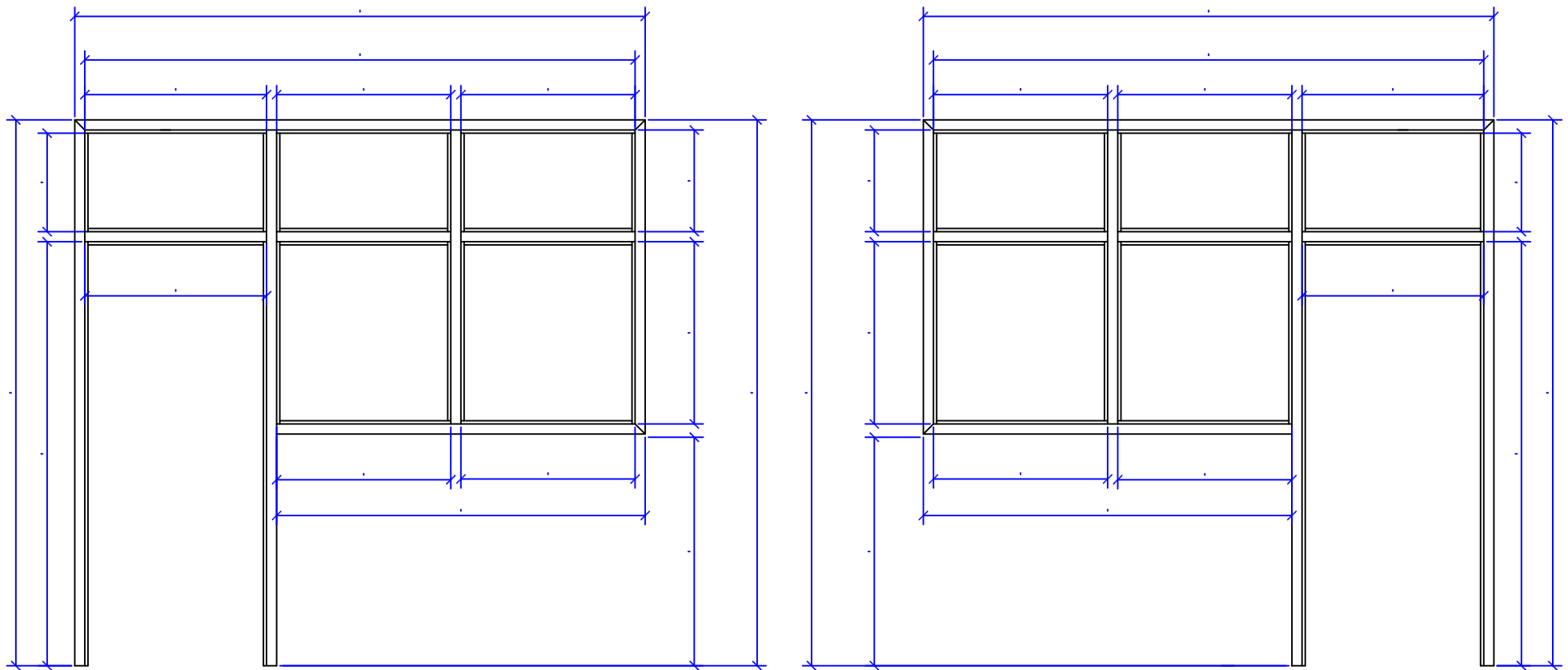




**MEGAMET  
INDUSTRIES**



**SIDELITES - glass bead to be attached with one screw tight against stop**

**Visit : <http://www.megametUSA.com>**

TOLERANCE ON ALL DIMENSIONS FRACTIONAL  $\pm \frac{3}{32}$   
UNLESS OTHERWISE SPECIFIED DECIMAL  $\pm 0.0937$

CUSTOMER:	
ARCHITECT:	
CONTRACTOR:	

ALL INFORMATION CONTAINED IN THIS DISCLOSURE WHETHER PATENTABLE OR OTHERWISE COMPRISES PROPRIETARY INFORMATION OF MEGAMET INDUSTRIES, INC. AND ITS UNAUTHORIZED USE OR PUBLICATION WITHOUT THE EXPRESS CONSENT OF MEGAMET INDUSTRIES, INC. IS STRICTLY PROHIBITED.

**Manufactured by  
MEGAMET INDUSTRIES, INC.  
Birmingham, Alabama**

NAME \_\_\_\_\_  
\_\_\_\_\_  
\_\_\_\_\_

DRAWN Roy Brady	DATE
CHECKED	SCALE
APPROVED	PROJECT



9

REV.