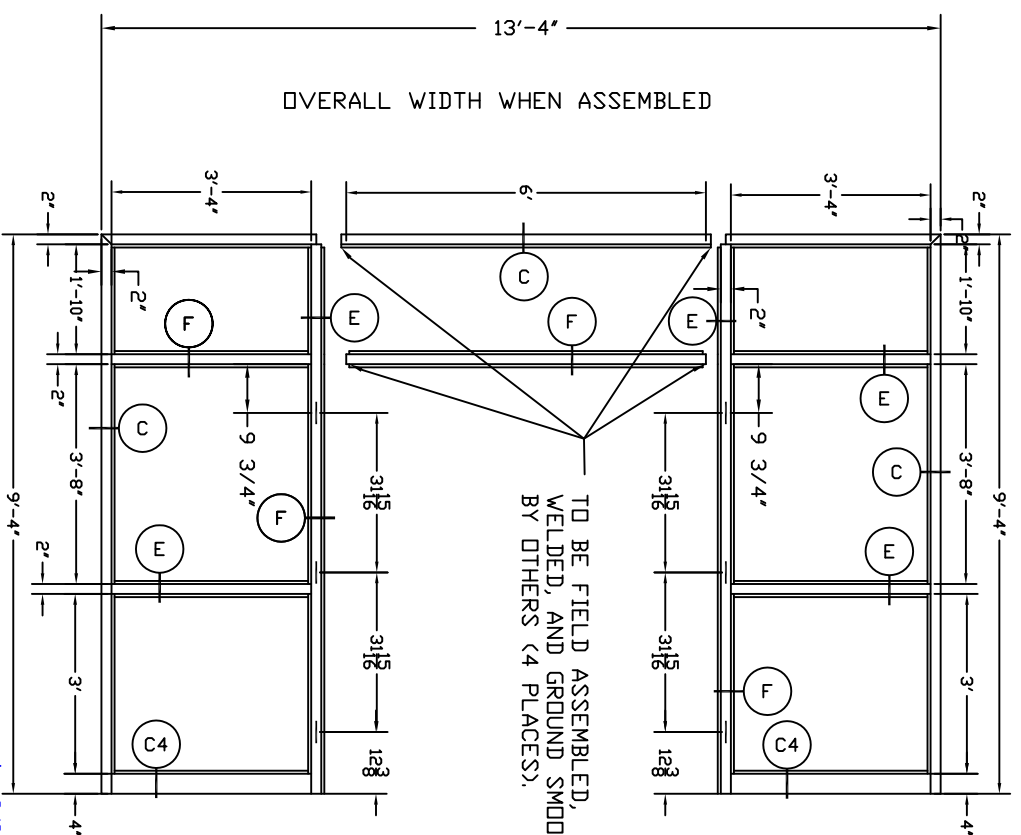


ELEV 12

TO BE FIELD ASSEMBLED, WELDED AND GROUND SMOOTH BY OTHERS (4 PLACES EACH SIDE).



ELEV 13

TO BE FIELD ASSEMBLED, WELDED, AND GROUND SMOOTH BY OTHERS (4 PLACES).

TOLERANCE ON ALL DIMENSIONS
 UNLESS OTHERWISE SPECIFIED
 FRACTIONAL ± 3/32"
 DECIMAL ± 0.0031"

CUSTOMER:	ALL INFORMATION CONTAINED IN THIS DISCUSSURE WHETHER PATENTABLE OR OTHERWISE COMPRISES PROPRIETARY INFORMATION OF MEGAMET INDUSTRIES, INC. AND ITS UNAUTHORIZED USE OR PUBLICATION WITHOUT THE EXPRESS CONSENT OF MEGAMET INDUSTRIES, INC. IS STRICTLY PROHIBITED.		
ARCHITECT:	NAME	DRAWN	DATE
CONTRACTOR:	CHURCHVILLE ELEMENTARY SCHOOL	R. BRADY	7-12-99
		CHECKED	SCALE
		APPROVED	NONE
			PROJECT
			ELEV 12 & 13
			REV.
			MEGAMET INDUSTRIES
			Birmingham, Alabama