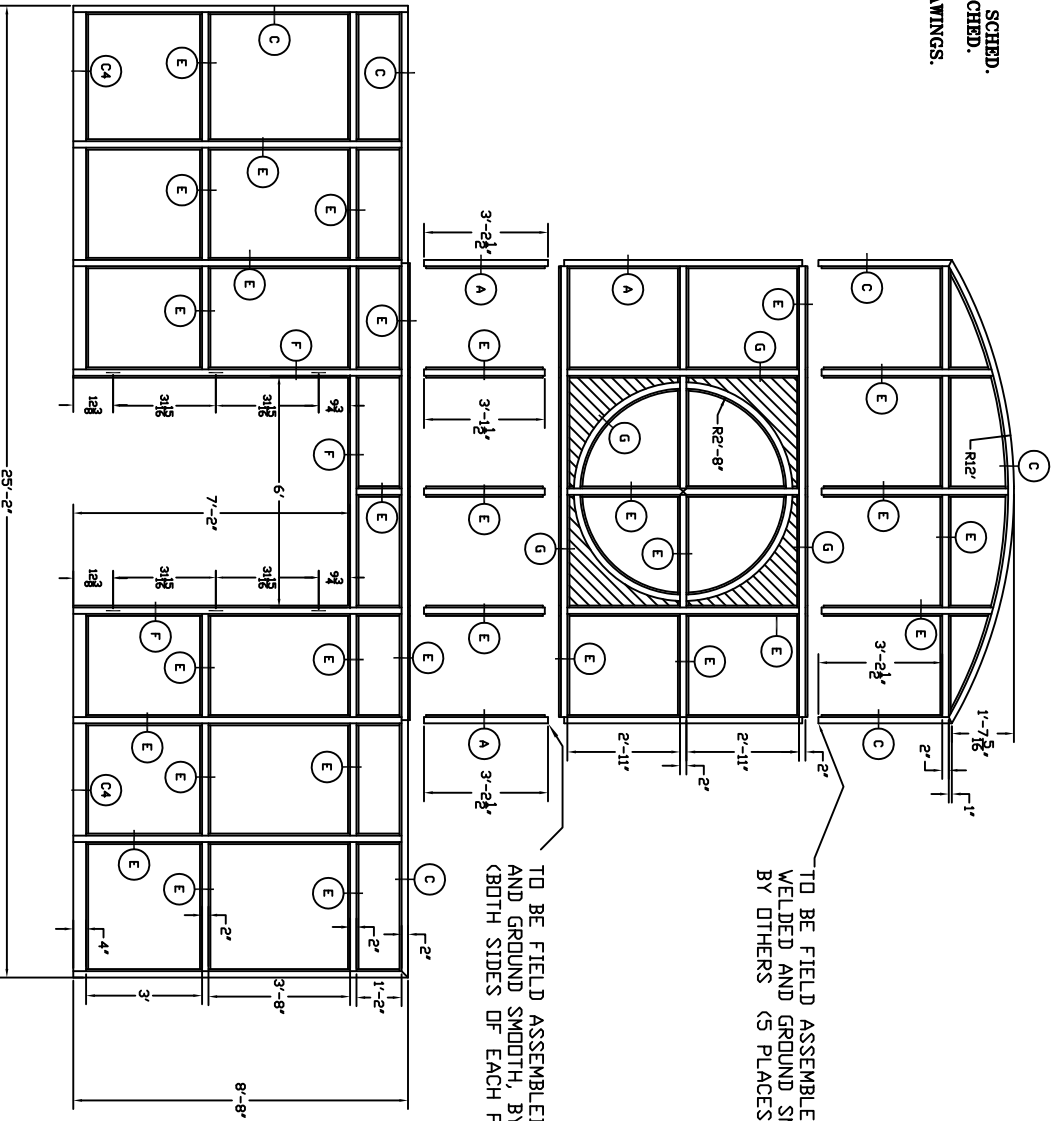


- NOTES:
- 1.- BUTTS SIZE PER APPROVED HDWR. SCHED.
 - 2.- QUANTITY OF BUTTS PER HDWR. SCHED.
 - 3.- HARDWARE LOCATION PER AMWELD.
 - 4.- PROFILE STILE PER APPROVED DRAWINGS.



TO BE FIELD ASSEMBLED,
WELDED AND GROUND SMOOTH
BY OTHERS
(5 PLACES).

TO BE FIELD ASSEMBLED, WELDED,
AND GROUND SMOOTH, BY OTHERS
(BOTH SIDES OF EACH PART).

TOLERANCE ON ALL DIMENSIONS
UNLESS OTHERWISE SPECIFIED

FRACTIONAL ± 3/32"
DECIMAL ± 0.0937"

CUSTOMER:	
ARCHITECT:	
CONTRACTOR:	

ALL INFORMATION CONTAINED IN THIS DISCLOSURE, WHETHER
PATENTABLE OR OTHERWISE, CONSTITUTES PROPRIETARY
INFORMATION OF MEGAMET INDUSTRIES, INC. AND
ITS UNAUTHORIZED USE OR PUBLICATION WITHOUT THE
EXPRESS CONSENT OF MEGAMET INDUSTRIES, INC.
IS STRICTLY PROHIBITED.

Manufactured by
MEGAMET INDUSTRIES, INC.
Birmingham, Alabama

NAME	CHURCHVILLE
	ELEMENTARY
	SCHOOL

DRAWN	DATE
R. BRADY	5-6-88
CHECKED	SCALE
APPROVED	PROJECT

	ELEV 14
	REV.